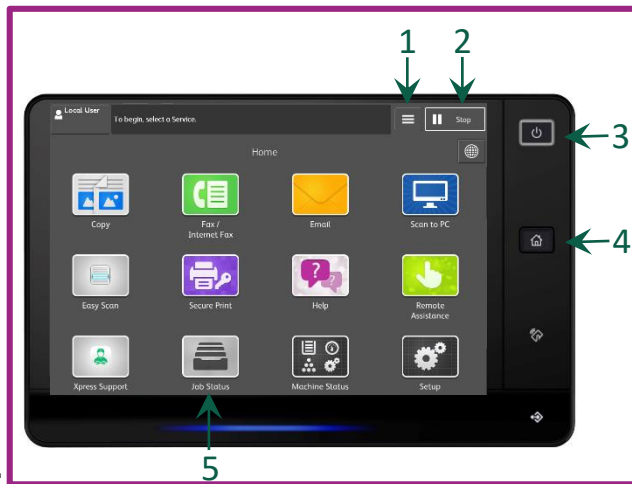


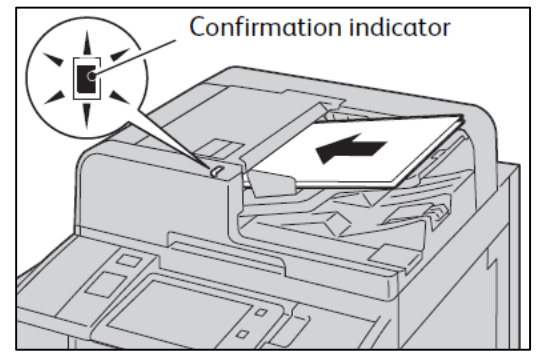


For assistance, please call 2513 2513.

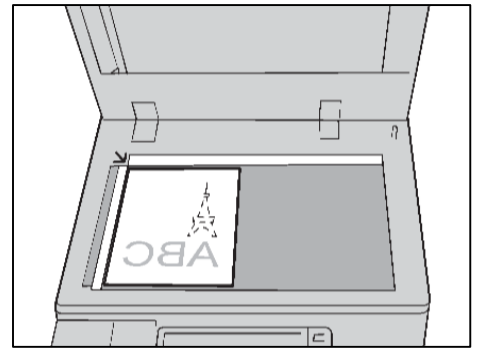
QUICK REFERENCE FOR ApeosPort® -VII C7788/C6688/C5588



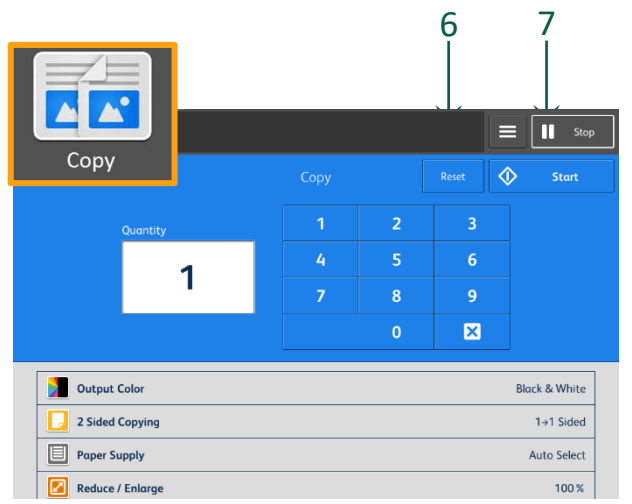
- No. and Component**
- 1 <Interrupt> button
 - 2 <Stop> button
 - 3 <Power Saver> button
 - 4 <Services Home> button
 - 5 <Job Status> button
 - 6 <Reset> button
 - 7 <Start> button



OR

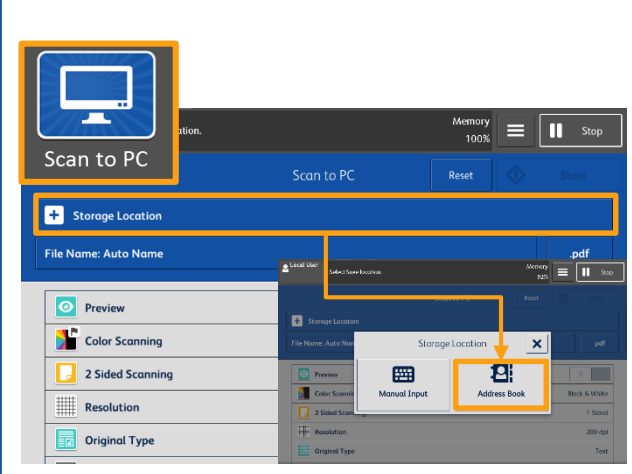


Copy



At [Copy] menu, select copy features, then press [Start].

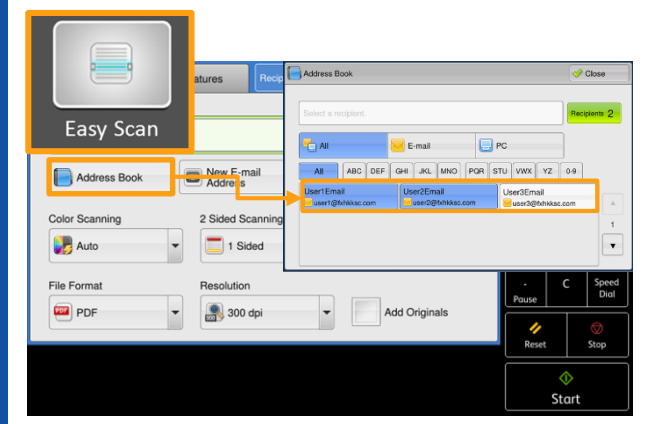
Scan



Select [Storage Location] to store the data in. Click [Close], then select scan features and press [Start].

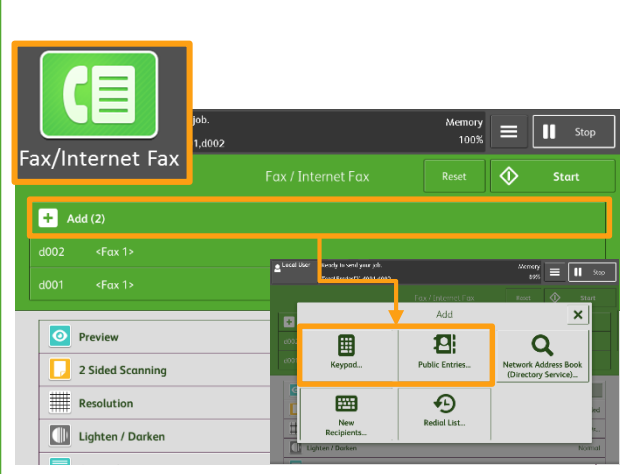
Easy Scan

Easy Scan can skip the blank pages and rotate the pages into correct orientation automatically.



Select recipient from the [Address Book] list. Click [Close], then press [Start].

Fax

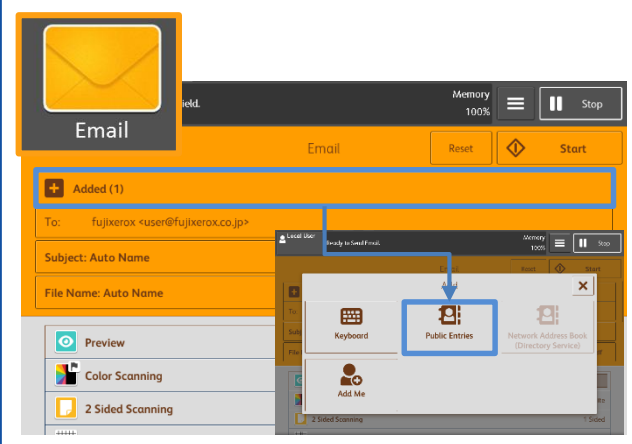


Select recipient from the [Add] list. Click [Close], then select fax features and press [Start].

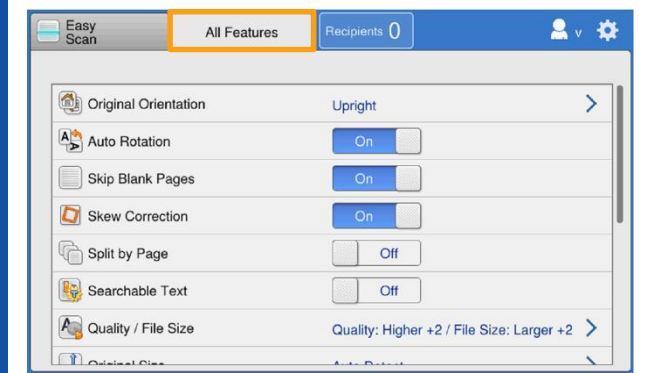
Scan QR Code for more instruction.



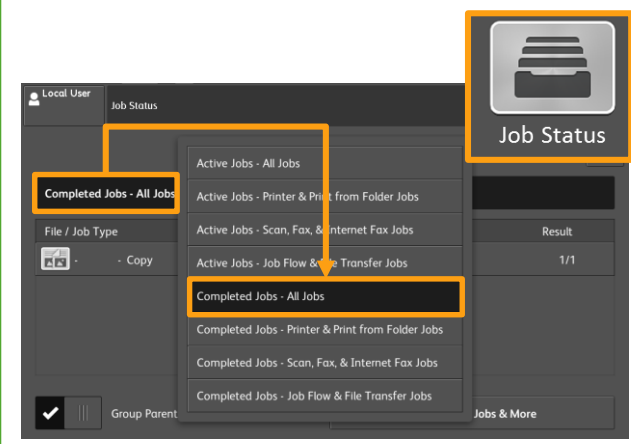
Visit below website for more online support.
<https://support-fb.fujifilm.com>



Select recipient from the [Add] list. Click [Close], then select scan features and press [Start].



Select [All Features] to find more scan features.



After fax transmission, select [Job Status], and then select [Completed Jobs - All Jobs] to verify the job completion status.